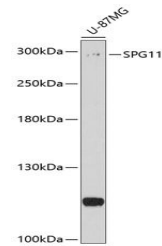


Product Datasheet

SPG11 antibody (orb538241)

Description	Rabbit polyclonal antibody to SPG11
Reactivity	Human
Conjugation	Unconjugated
Tested Applications	WB
Immunogen	Recombinant fusion protein of human SPG11(NP_079413.3).
Preservatives	PBS with 0.02% sodium azide,50% glycerol,pH7.3.
Storage	Maintain refrigerated at 2-8°C for up to 2 weeks. For long term storage store at -20°C in small aliquots to prevent freeze-thaw cycles.
Note	For research use only
Isotype	IgG
Clonality	Polyclonal
MW	280kDa
Uniprot ID	Q96J17
Dilution Range	WB: 1:200-1:2000
Expiration Date	12 months from date of receipt.



Western blot analysis of extracts of U-8...