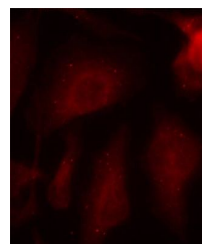


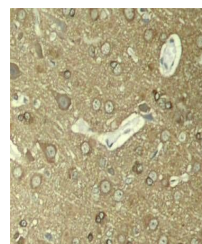
Product Datasheet

MAPT (Phospho-S404) antibody (orb538124)

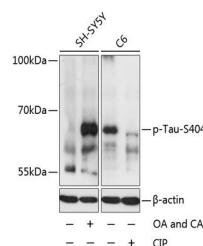
Description	Rabbit polyclonal antibody to MAPT (Phospho-S404)
Reactivity	Human, Mouse, Rat
Conjugation	Unconjugated
Tested Applications	ICC, IF, IHC, WB
Immunogen	A synthetic phosphorylated peptide around S404 of human Tau(NP_005901.2).
Preservatives	PBS with 0.01% thiomersal, 50% glycerol, pH 7.3.
Storage	Maintain refrigerated at 2-8°C for up to 2 weeks. For long term storage store at -20°C in small aliquots to prevent freeze-thaw cycles.
Note	For research use only
Isotype	IgG
Clonality	Polyclonal
MW	65kDa
Uniprot ID	P10636
Dilution Range	WB: 1:500-1:2000, IHC-P: 1:50-1:100, IF: 1:100-1:200
Expiration Date	12 months from date of receipt.



Immunofluorescence analysis of methanol-
...



Immunohistochemical staining of rat hipp...



Western blot analysis of extracts of SH-...