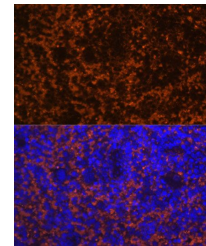


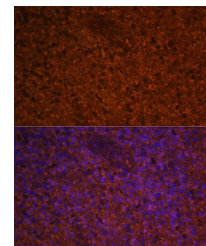
Product Datasheet

MIP3 beta antibody (orb538069)

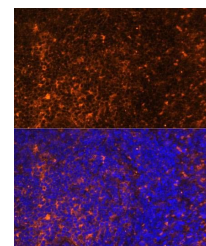
Description	Rabbit Polyclonal antibody to MIP3 beta
Reactivity	Human, Mouse, Rat
Conjugation	Unconjugated
Tested Applications	ICC, IF, WB
Immunogen	Recombinant fusion protein of human CCL19(NP_006265.1).
Preservatives	PBS with 0.01% thiomersal,50% glycerol,pH7.3.
Storage	Store at -20°C. Avoid freeze / thaw cycles.
Note	For research use only
Isotype	IgG
Clonality	Polyclonal
MW	13kDa
Uniprot ID	Q99731
Dilution Range	WB: 1:500-1:2000
Expiration Date	12 months from date of receipt.



Immunofluorescence analysis of mouse spleen...



Immunofluorescence analysis of human spleen...



Immunofluorescence analysis of rat spleen...