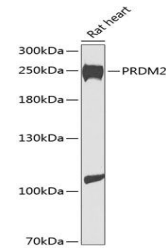


Product Datasheet

PRDM2 antibody (orb538012)

Description	Rabbit polyclonal antibody to PRDM2
Species/Host	Rabbit
Reactivity	Rat
Conjugation	Unconjugated
Tested Applications	ELISA, IHC-P, WB
Immunogen	Recombinant fusion protein containing a sequence corresponding to amino acids 1-240 of human PRDM2 (NP_036363.2).
Preservatives	PBS with 0.02% sodium azide, 50% glycerol, pH 7.3.
Storage	Maintain refrigerated at 2-8°C for up to 2 weeks. For long term storage store at -20°C in small aliquots to prevent freeze-thaw cycles.
Note	For research use only
Isotype	IgG
Clonality	Polyclonal
MW	250kDa
Uniprot ID	Q13029
Dilution Range	WB: 1:500-1:2000, IHC-P: 1:50-1:200
Expiration Date	12 months from date of receipt.



Western blot analysis of extracts of rat...