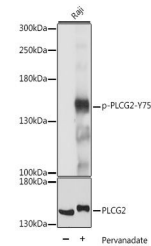


Product Datasheet

PLCG2 (Phospho-Y759) antibody (orb537941)

| | |
|----------------------------|---|
| Description | Rabbit polyclonal antibody to PLCG2 (Phospho-Y759) |
| Reactivity | Human |
| Conjugation | Unconjugated |
| Tested Applications | WB |
| Immunogen | A synthetic phosphorylated peptide around Y759 of human PLC gamma 2 (PLCG2)(NP_002652.2). |
| Preservatives | PBS with 0.01% thiomersal,50% glycerol,pH7.3. |
| Storage | Maintain refrigerated at 2-8°C for up to 2 weeks. For long term storage store at -20°C in small aliquots to prevent freeze-thaw cycles. |
| Note | For research use only |
| Isotype | IgG |
| Clonality | Polyclonal |
| MW | 150kDa |
| Uniprot ID | P16885 |
| Dilution Range | WB: 1:500-1:2000 |
| Expiration Date | 12 months from date of receipt. |



Western blot analysis of extracts of Raj...