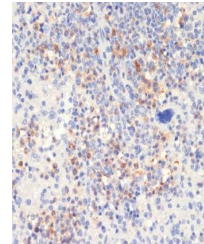


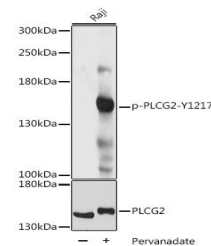
Product Datasheet

PLCG2 (Phospho-Y1217) antibody (orb537940)

Description	Rabbit polyclonal antibody to PLCG2 (Phospho-Y1217)
Reactivity	Human, Mouse
Conjugation	Unconjugated
Tested Applications	IHC, WB
Immunogen	A synthetic phosphorylated peptide around Y1217 of human PLC gamma 2 (PLCG2)(NP_002652.2).
Preservatives	PBS with 0.01% thiomersal,50% glycerol,pH7.3.
Storage	Maintain refrigerated at 2-8°C for up to 2 weeks. For long term storage store at -20°C in small aliquots to prevent freeze-thaw cycles.
Note	For research use only
Isotype	IgG
Clonality	Polyclonal
MW	150kDa
Uniprot ID	P16885
Dilution Range	WB: 1:500-1:2000, IHC-P: 1:50-1:200
Expiration Date	12 months from date of receipt.



Immunohistochemical staining of mouse sp...



Western blot analysis of extracts of Raj...