

## Product Datasheet

### BRAF (Phospho-S445) antibody (orb537939)

**Description** Rabbit polyclonal antibody to BRAF (Phospho-S445)

**Reactivity** Human, Rat

**Conjugation** Unconjugated

**Tested Applications** WB

**Immunogen** A synthetic phosphorylated peptide around S445 of human BRAF(NP\_004324.2).

**Preservatives** PBS with 0.02% sodium azide,50% glycerol,pH7.3.

**Storage** Maintain refrigerated at 2-8°C for up to 2 weeks. For long term storage store at -20°C in small aliquots to prevent freeze-thaw cycles.

**Note** For research use only

**Isotype** IgG

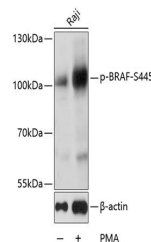
**Clonality** Polyclonal

**MW** 100kDa

**Uniprot ID** **P15056**

**Dilution Range** WB: 1:500-1:2000

**Expiration Date** 12 months from date of receipt.



Western blot analysis of extracts of Raj...