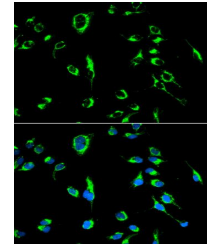


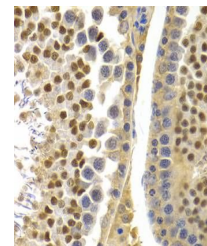
## Product Datasheet

### APOBEC3G antibody (orb537917)

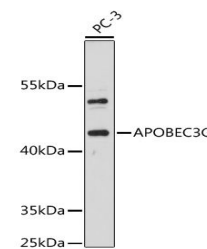
<b>Description</b>	Rabbit polyclonal antibody to APOBEC3G
<b>Species/Host</b>	Rabbit
<b>Reactivity</b>	Human, Mouse, Rat
<b>Conjugation</b>	Unconjugated
<b>Tested Applications</b>	ELISA, IF, IHC-P, WB
<b>Immunogen</b>	A synthetic peptide corresponding to a sequence within amino acids 244-257 of human APOBEC3G (NP_068594.1).
<b>Preservatives</b>	PBS with 0.01% thimerosal, 50% glycerol, pH 7.3.
<b>Storage</b>	Maintain refrigerated at 2-8°C for up to 2 weeks. For long term storage store at -20°C in small aliquots to prevent freeze-thaw cycles.
<b>Note</b>	For research use only
<b>Isotype</b>	IgG
<b>Clonality</b>	Polyclonal
<b>MW</b>	45kDa
<b>Uniprot ID</b>	<b>Q9HC16</b>
<b>Dilution Range</b>	WB: 1:500-1:2000, IHC-P: 1:50-1:200, IF: 1:50-1:200
<b>Expiration Date</b>	12 months from date of receipt.



Immunofluorescence analysis of MCF-7 cells.



Immunohistochemical staining of rat testis.



Western blot analysis of extracts of PC-3 cells.