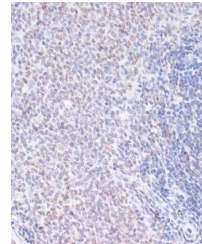


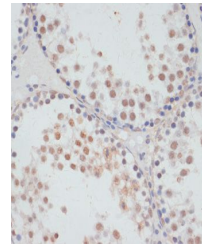
Product Datasheet

RPS6KA5 (Phospho-S376) antibody (orb537897)

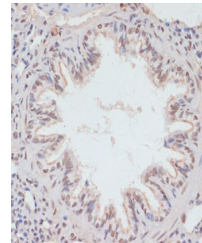
Description	Rabbit polyclonal antibody to RPS6KA5 (Phospho-S376)
Reactivity	Human, Mouse, Rat
Conjugation	Unconjugated
Tested Applications	IHC, WB
Immunogen	A synthetic phosphorylated peptide around S376 of human RPS6KA5(NP_004746.2).
Preservatives	PBS with 0.01% thiomersal, 50% glycerol, pH 7.3.
Storage	Maintain refrigerated at 2-8°C for up to 2 weeks. For long term storage store at -20°C in small aliquots to prevent freeze-thaw cycles.
Note	For research use only
Isotype	IgG
Clonality	Polyclonal
MW	90kDa
Uniprot ID	075582
Dilution Range	WB: 1:500-1:2000, IHC-P: 1:50-1:100
Expiration Date	12 months from date of receipt.



Immunohistochemical staining of rat spleen...



Immunohistochemical staining of rat testis...



Immunohistochemical staining of rat lung...