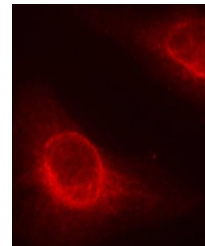


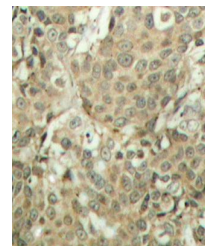
Product Datasheet

CFL1 (Phospho-S3) antibody (orb537887)

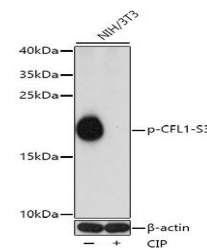
Description	Rabbit polyclonal antibody to CFL1 (Phospho-S3)
Reactivity	Human, Mouse, Rat
Conjugation	Unconjugated
Tested Applications	ICC, IF, IHC, WB
Immunogen	A synthetic phosphorylated peptide around S3 of human CFL1(NP_005498.1).
Preservatives	PBS with 0.01% thiomersal,50% glycerol,pH7.3.
Storage	Maintain refrigerated at 2-8°C for up to 2 weeks. For long term storage store at -20°C in small aliquots to prevent freeze-thaw cycles.
Note	For research use only
Isotype	IgG
Clonality	Polyclonal
MW	18kDa
Uniprot ID	P23528
Dilution Range	WB: 1:500-1:2000, IHC-P: 1:50-1:100, IF: 1:100-1:200
Expiration Date	12 months from date of receipt.



Immunofluorescence analysis of methanol-
...



Immunohistochemical staining of human
br...



Western blot analysis of extracts of NIH-
...