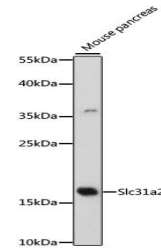


Product Datasheet

Slc31a2 antibody (orb537769)

Description	Rabbit polyclonal antibody to Slc31a2
Species/Host	Rabbit
Reactivity	Mouse
Conjugation	Unconjugated
Tested Applications	WB
Immunogen	A synthetic peptide of mouse Slc31a2 (NP_001277447.1).
Preservatives	Buffer: PBS with 0.02% sodium azide,50% glycerol,pH7.3.
Storage	Maintain refrigerated at 2-8°C for up to 2 weeks. For long term storage store at -20°C in small aliquots to prevent freeze-thaw cycles.
Note	For research use only
Isotype	IgG
Clonality	Polyclonal
Purity	Affinity purification
MW	16kDa
Uniprot ID	O15432
Entrez	20530
Dilution Range	WB: 1:500-1:2000
Expiration Date	12 months from date of receipt.



Western blot analysis of extracts of mou...