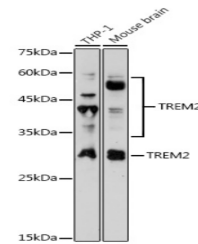


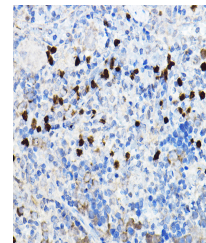
Product Datasheet

TREM2 antibody (orb537739)

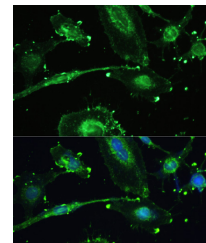
| | |
|----------------------------|---|
| Description | Rabbit polyclonal antibody to TREM2 |
| Reactivity | Human, Mouse, Rat |
| Conjugation | Unconjugated |
| Tested Applications | ICC, IF, WB |
| Immunogen | Recombinant fusion protein of human TREM2(NP_061838.1). |
| Preservatives | PBS with 0.05% proclin300,50% glycerol,pH7.3. |
| Storage | Maintain refrigerated at 2-8°C for up to 2 weeks. For long term storage store at -20°C in small aliquots to prevent freeze-thaw cycles. |
| Note | For research use only |
| Isotype | IgG |
| Clonality | Polyclonal |
| MW | 30-50KDa/28KDa |
| Uniprot ID | Q9NZC2 |
| Dilution Range | WB: 1:500 - 1:1000, IHC-P: 1:50 - 1:200, IF/ICC: 1:20 - 1:100 |
| Expiration Date | 12 months from date of receipt. |



Western blot analysis of extracts of var...



Immunohistochemical staining of rat sple...



Immunofluorescence analysis of U-251MG C...