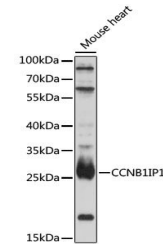


Product Datasheet

CCNB1IP1 antibody (orb537530)

| | |
|----------------------------|---|
| Description | Rabbit polyclonal antibody to CCNB1IP1 |
| Reactivity | Mouse |
| Conjugation | Unconjugated |
| Tested Applications | WB |
| Immunogen | A synthetic peptide of human CCNB1IP1(NP_878269.1). |
| Preservatives | PBS with 0.01% thiomersal,50% glycerol,pH7.3. |
| Storage | Maintain refrigerated at 2-8°C for up to 2 weeks. For long term storage store at -20°C in small aliquots to prevent freeze-thaw cycles. |
| Note | For research use only |
| Isotype | IgG |
| Clonality | Polyclonal |
| MW | 31kDa |
| Uniprot ID | Q9NPC3 |
| Dilution Range | WB: 1:500-1:2000 |
| Expiration Date | 12 months from date of receipt. |



Western blot analysis of extracts of mou...