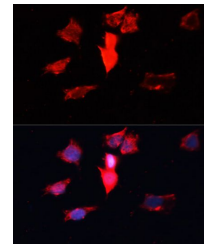


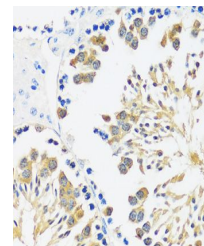
Product Datasheet

CALM3 antibody (orb537414)

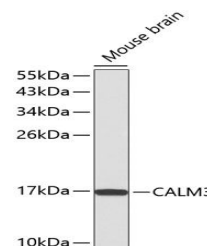
Description	Rabbit polyclonal antibody to CALM3
Reactivity	Human, Mouse, Rat
Conjugation	Unconjugated
Tested Applications	ICC, IF, WB
Immunogen	A synthetic peptide of human CALM3(NP_005175.2).
Preservatives	PBS with 0.01% thiomersal, 50% glycerol, pH 7.3.
Storage	Maintain refrigerated at 2-8°C for up to 2 weeks. For long term storage store at -20°C in small aliquots to prevent freeze-thaw cycles.
Note	For research use only
Isotype	IgG
Clonality	Polyclonal
MW	17kDa
Uniprot ID	P62158
Dilution Range	WB: 1:500-1:2000, IHC-P: 1:50-1:100, IF: 1:50-1:100
Expiration Date	12 months from date of receipt.



Immunofluorescence analysis of HeLa cell...



Immunohistochemical staining of mouse te...



Western blot analysis of extracts of mou...