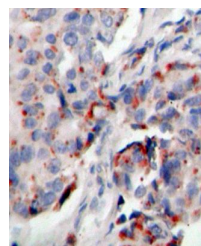


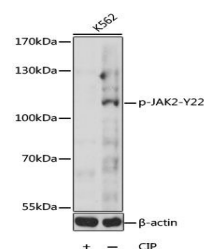
Product Datasheet

JAK2 (Phospho-Y221) antibody (orb537330)

Description	Rabbit polyclonal antibody to JAK2 (Phospho-Y221)
Species/Host	Rabbit
Reactivity	Human, Mouse, Rat
Conjugation	Unconjugated
Tested Applications	IHC, WB
Immunogen	A phospho specific peptide corresponding to residues surrounding Y221 of human Phospho-JAK2-Y221
Preservatives	Buffer: PBS with 0.02% sodium azide, 50% glycerol, pH7.3.
Storage	Maintain refrigerated at 2-8°C for up to 2 weeks. For long term storage store at -20°C in small aliquots to prevent freeze-thaw cycles.
Note	For research use only
Isotype	IgG
Clonality	Polyclonal
Purity	Affinity purification
MW	125kDa
Uniprot ID	O60674
Entrez	3717
Dilution Range	WB: 1:500-1:2000, IHC-P: 1:50-1:100
Expiration Date	12 months from date of receipt.



Immunohistochemical staining of human br...



Western blot analysis of extracts of K56...