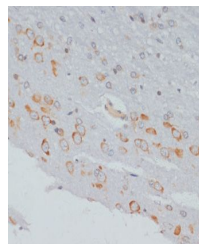


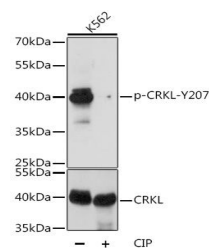
Product Datasheet

CRKL (Phospho-Y207) antibody (orb537328)

Description	Rabbit polyclonal antibody to CRKL (Phospho-Y207)
Reactivity	Human, Mouse, Rat
Conjugation	Unconjugated
Tested Applications	IHC, WB
Immunogen	A synthetic phosphorylated peptide around Y207 of human CRKL(NP_005198.1).
Preservatives	PBS with 0.01% thiomersal,50% glycerol,pH7.3.
Storage	Maintain refrigerated at 2-8°C for up to 2 weeks. For long term storage store at -20°C in small aliquots to prevent freeze-thaw cycles.
Note	For research use only
Isotype	IgG
Clonality	Polyclonal
MW	38kDa
Uniprot ID	P46109
Dilution Range	WB: 1:500-1:2000, IHC-P: 1:50-1:100
Expiration Date	12 months from date of receipt.



Immunohistochemical staining of rat brain...



Western blot analysis of extracts of K-5...