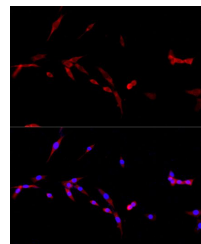


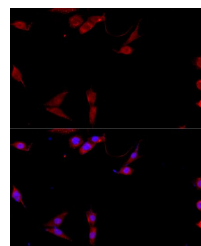
## Product Datasheet

### CD40LG antibody (orb537317)

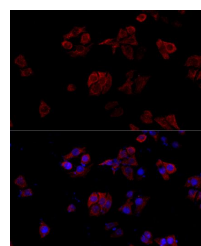
<b>Description</b>	Rabbit polyclonal antibody to CD40LG
<b>Reactivity</b>	Human, Mouse, Rat
<b>Conjugation</b>	Unconjugated
<b>Tested Applications</b>	ICC, IF, IHC, WB
<b>Immunogen</b>	A synthetic peptide of human CD40L(NP_000065.1).
<b>Preservatives</b>	PBS with 0.01% thiomersal,50% glycerol,pH7.3.
<b>Storage</b>	Store at -20°C. Avoid freeze / thaw cycles.
<b>Note</b>	For research use only
<b>Isotype</b>	IgG
<b>Clonality</b>	Polyclonal
<b>MW</b>	25-30KDa
<b>Uniprot ID</b>	<b>P29965</b>
<b>Dilution Range</b>	WB: 1:1000-1:2000
<b>Expiration Date</b>	12 months from date of receipt.



Immunofluorescence analysis of PC-12 cell...



Immunofluorescence analysis of NIH/3T3 C...



Immunofluorescence analysis of HeLa cell...