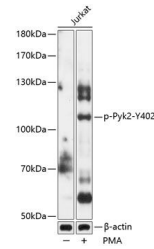


Product Datasheet

Pyk2 (Phospho-Y402) antibody (orb537301)

Description	Rabbit polyclonal antibody to Pyk2 (Phospho-Y402)
Reactivity	Human
Conjugation	Unconjugated
Tested Applications	WB
Immunogen	A synthetic phosphorylated peptide around Y402 of human Pyk2(NP_004094.3).
Preservatives	PBS with 0.02% sodium azide,50% glycerol,pH7.3.
Storage	Maintain refrigerated at 2-8°C for up to 2 weeks. For long term storage store at -20°C in small aliquots to prevent freeze-thaw cycles.
Note	For research use only
Isotype	IgG
Clonality	Polyclonal
MW	116kDa
Uniprot ID	Q14289
Dilution Range	WB: 1:500-1:2000
Expiration Date	12 months from date of receipt.



Western blot analysis of extracts of Jur...