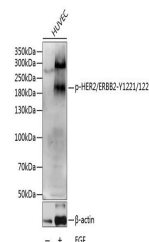


Product Datasheet

ERBB2 (Phospho-Y1221/1222) antibody (orb537269)

Description	Rabbit polyclonal antibody to ERBB2 (Phospho-Y1221/1222)
Reactivity	Human
Conjugation	Unconjugated
Tested Applications	WB
Immunogen	A synthetic phosphorylated peptide around Y1221 & Y1222 of human HER2/ERBB2(NP_004439.2).
Preservatives	PBS with 0.05% proclin300,50% glycerol,pH7.3.
Storage	Maintain refrigerated at 2-8°C for up to 2 weeks. For long term storage store at -20°C in small aliquots to prevent freeze-thaw cycles.
Note	For research use only
Isotype	IgG
Clonality	Polyclonal
MW	185KDa
Uniprot ID	P04626
Dilution Range	WB: 1:500-1:1000
Expiration Date	12 months from date of receipt.



Western blot analysis of extracts of HUV...