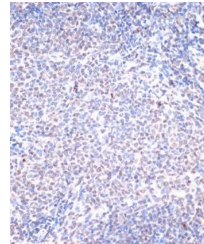


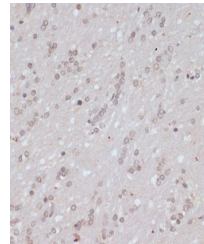
Product Datasheet

BRCA1 (Phospho-S1423) antibody (orb537248)

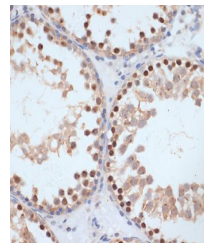
Description	Rabbit polyclonal antibody to BRCA1 (Phospho-S1423)
Species/Host	Rabbit
Reactivity	Human, Mouse, Rat
Conjugation	Unconjugated
Tested Applications	IF, IHC, WB
Immunogen	A synthetic phosphorylated peptide around S1423 of human BRCA1 (NP_009225.1).
Preservatives	Buffer: PBS with 0.02% sodium azide, 50% glycerol, pH7.3.
Storage	Maintain refrigerated at 2-8°C for up to 2 weeks. For long term storage store at -20°C in small aliquots to prevent freeze-thaw cycles.
Note	For research use only
Isotype	IgG
Clonality	Polyclonal
Purity	Affinity purification
MW	270kDa
Uniprot ID	P38398
Entrez	672
Dilution Range	WB: 1:500-1:2000, IHC-P: 1:50-1:200, IF: 1:50-1:200
Expiration Date	12 months from date of receipt.



Immunohistochemical staining of rat spleen...



Immunohistochemical staining of rat brain...



Immunohistochemical staining of rat testis...