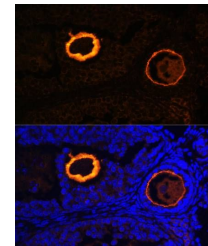


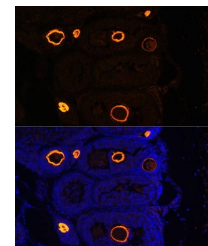
Product Datasheet

ZP3 antibody (orb537155)

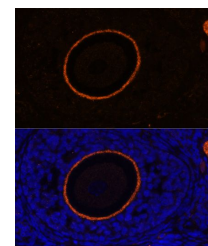
Description	Rabbit polyclonal antibody to ZP3
Reactivity	Human, Mouse, Rat
Conjugation	Unconjugated
Tested Applications	ICC, IF, WB
Immunogen	A synthetic peptide of human ZP3(NP_001103824.1).
Preservatives	PBS with 0.01% thiomersal,50% glycerol,pH7.3.
Storage	Maintain refrigerated at 2-8°C for up to 2 weeks. For long term storage store at -20°C in small aliquots to prevent freeze-thaw cycles.
Note	For research use only
Isotype	IgG
Clonality	Polyclonal
MW	47kDa
Uniprot ID	P21754
Dilution Range	WB: 1:500-1:2000
Expiration Date	12 months from date of receipt.



Immunofluorescence analysis of mouse ooph...



Immunofluorescence analysis of mouse oop...



Immunofluorescence analysis of rat oopho...