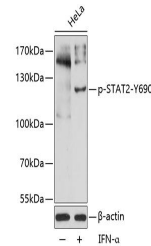


Product Datasheet

STAT2 (Phospho-Y690) antibody (orb537119)

Description	Rabbit polyclonal antibody to STAT2 (Phospho-Y690)
Reactivity	Human, Mouse, Rat
Conjugation	Unconjugated
Tested Applications	WB
Immunogen	A synthetic phosphorylated peptide around Y690 of human STAT2(NP_005410.1).
Preservatives	PBS with 0.01% thiomersal,50% glycerol,pH7.3.
Storage	Maintain refrigerated at 2-8°C for up to 2 weeks. For long term storage store at -20°C in small aliquots to prevent freeze-thaw cycles.
Note	For research use only
Isotype	IgG
Clonality	Polyclonal
MW	113KDa
Uniprot ID	P52630
Dilution Range	WB: 1:500-1:1000
Expiration Date	12 months from date of receipt.



Western blot analysis of extracts of HeLa...