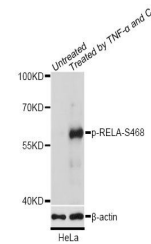


Product Datasheet

RELA (Phospho-S468) antibody (orb537114)

Description	Rabbit polyclonal antibody to RELA (Phospho-S468)
Reactivity	Human, Mouse
Conjugation	Unconjugated
Tested Applications	WB
Immunogen	A synthetic phosphorylated peptide around S468 of human Phospho-NF-kB p65/RelA-S468(NP_001138610.1).
Preservatives	PBS with 0.01% thiomersal, 50% glycerol, pH7.3.
Storage	Maintain refrigerated at 2-8°C for up to 2 weeks. For long term storage store at -20°C in small aliquots to prevent freeze-thaw cycles.
Note	For research use only
Isotype	IgG
Clonality	Polyclonal
MW	60kDa
Uniprot ID	Q04206
Dilution Range	WB: 1:500-1:2000
Expiration Date	12 months from date of receipt.



Western blot analysis of extracts of HeL...