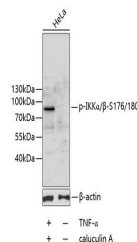


Product Datasheet

IKKalpha/beta (Phospho-S176/180) antibody (orb537107)

| | |
|----------------------------|---|
| Description | Rabbit polyclonal antibody to IKKalpha/beta (Phospho-S176/180) |
| Species/Host | Rabbit |
| Reactivity | Human, Mouse |
| Conjugation | Unconjugated |
| Tested Applications | WB |
| Immunogen | A synthetic phosphorylated peptide around S176 of human IKK-alpha (NP_001269.3). |
| Preservatives | Buffer: PBS with 0.02% sodium azide, 50% glycerol, pH 7.3. |
| Storage | Maintain refrigerated at 2-8°C for up to 2 weeks. For long term storage store at -20°C in small aliquots to prevent freeze-thaw cycles. |
| Note | For research use only |
| Isotype | IgG |
| Clonality | Polyclonal |
| Purity | Affinity purification |
| MW | 85KDa |
| Uniprot ID | O15111 |
| Entrez | 11473551 |
| Dilution Range | WB: 1:500-1:2000 |
| Expiration Date | 12 months from date of receipt. |



Western blot analysis of extracts of HeL...