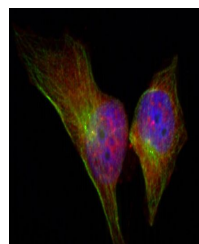


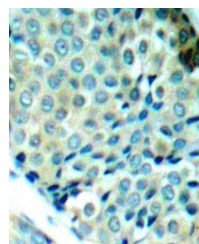
## Product Datasheet

### HSPB1 (Phospho-S78) antibody (orb537106)

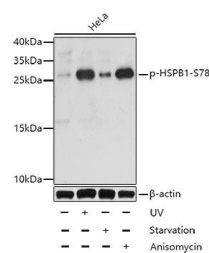
<b>Description</b>	Rabbit polyclonal antibody to HSPB1 (Phospho-S78)
<b>Reactivity</b>	Human
<b>Conjugation</b>	Unconjugated
<b>Tested Applications</b>	ICC, IF, IHC, WB
<b>Immunogen</b>	A synthetic phosphorylated peptide around S78 of human HSP27/HSPB1(NP_001531.1).
<b>Preservatives</b>	PBS with 0.01% thiomersal,50% glycerol,pH7.3.
<b>Storage</b>	Maintain refrigerated at 2-8°C for up to 2 weeks. For long term storage store at -20°C in small aliquots to prevent freeze-thaw cycles.
<b>Note</b>	For research use only
<b>Isotype</b>	IgG
<b>Clonality</b>	Polyclonal
<b>MW</b>	28kDa
<b>Uniprot ID</b>	<b>P04792</b>
<b>Dilution Range</b>	WB: 1:500-1:2000, IHC-P: 1:50-1:100, IF: 1:100-1:200
<b>Expiration Date</b>	12 months from date of receipt.



Immunofluorescence analysis of HeLa cell...



Immunohistochemical staining of human br...



Western blot analysis of extracts of HeL...