

Product Datasheet

Histone H3 (Phospho-S10) antibody (orb537105)

Description Rabbit polyclonal antibody to Histone H3 (Phospho-S10)

Reactivity All, Human, Mouse, Rat

Conjugation Unconjugated

Tested Applications ICC, IF, IHC, WB

Immunogen A synthetic phosphorylated peptide around S10 of human Histone H3(NP_003484.1).

Preservatives PBS with 0.01% thiomersal,50% glycerol,pH7.3.

Storage Maintain refrigerated at 2-8°C for up to 2 weeks. For long term storage store at -20°C in small aliquots to prevent freeze-thaw cycles.

Note For research use only

Isotype IgG

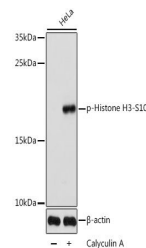
Clonality Polyclonal

MW 17KDa

Uniprot ID [Q16695](#)

Dilution Range WB: 1:500-1:2000

Expiration Date 12 months from date of receipt.



Western blot analysis of extracts of HeL...