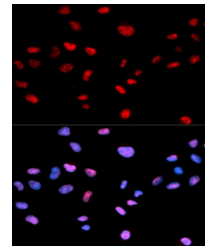


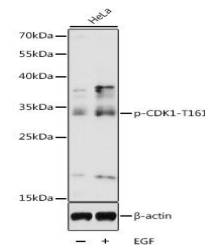
Product Datasheet

CDK1 (Phospho-T161) antibody (orb537098)

Description	Rabbit polyclonal antibody to CDK1 (Phospho-T161)
Reactivity	Human, Mouse
Conjugation	Unconjugated
Tested Applications	IHC, IP, WB
Immunogen	A synthetic phosphorylated peptide around T161 of human CDK1(NP_001777.1).
Preservatives	PBS with 0.05% proclin300,50% glycerol,pH7.3.
Storage	Maintain refrigerated at 2-8°C for up to 2 weeks. For long term storage store at -20°C in small aliquots to prevent freeze-thaw cycles.
Note	For research use only
Isotype	IgG
Clonality	Polyclonal
MW	34KDa
Uniprot ID	P06493
Dilution Range	WB: 1:500-1:2000, IHC-P: 1:50-1:200, IF: 1:50-1:200, IP: 1:50-1:100
Expiration Date	12 months from date of receipt.



Immunofluorescence analysis of MCF-7 cel...



Western blot analysis of extracts of HeL...