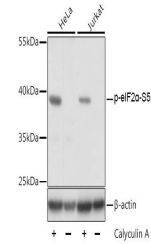


Product Datasheet

eIF2alpha (Phospho-S51) antibody (orb537038)

Description	Rabbit polyclonal antibody to eIF2alpha (Phospho-S51)
Reactivity	Human, Mouse, Rat
Conjugation	Unconjugated
Tested Applications	ICC, IF, IP, WB
Immunogen	A synthetic phosphorylated peptide around S51 of human eIF2 α (NP_004085.1).
Preservatives	PBS with 0.05% proclin300,50% glycerol,pH7.3.
Storage	Maintain refrigerated at 2-8°C for up to 2 weeks. For long term storage store at -20°C in small aliquots to prevent freeze-thaw cycles.
Note	For research use only
Isotype	IgG
Clonality	Polyclonal
MW	38kDa
Uniprot ID	P05198
Dilution Range	WB: 1:1000-1:2000, IP: 1:50-1:100
Expiration Date	12 months from date of receipt.



Western blot analysis of extracts of HeL...