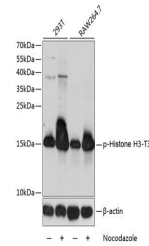


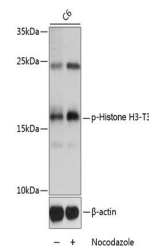
Product Datasheet

Histone HIST1H3A (Phospho-T3) antibody (orb537009)

Description	Rabbit polyclonal antibody to Histone HIST1H3A (Phospho-T3)
Reactivity	All, Human, Mouse, Rat
Conjugation	Unconjugated
Tested Applications	WB
Immunogen	A synthetic phosphorylated peptide around T3 of human HIST1H3A(NP_003520.1).
Preservatives	PBS with 0.01% thiomersal,50% glycerol,pH7.3.
Storage	Maintain refrigerated at 2-8°C for up to 2 weeks. For long term storage store at -20°C in small aliquots to prevent freeze-thaw cycles.
Note	For research use only
Isotype	IgG
Clonality	Polyclonal
MW	17KDa
Uniprot ID	P68431
Dilution Range	WB: 1:500-1:2000
Expiration Date	12 months from date of receipt.



Western blot analysis of extracts of var...



Western blot analysis of extracts of C6 ...