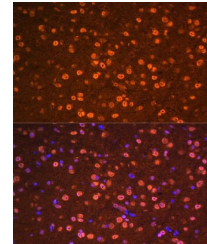


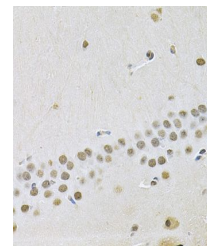
Product Datasheet

OTX2 antibody (orb536986)

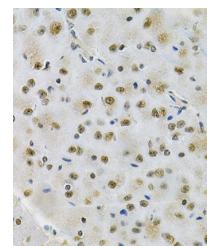
| | |
|----------------------------|---|
| Description | Rabbit polyclonal antibody to OTX2 |
| Species/Host | Rabbit |
| Reactivity | Human, Mouse, Rat |
| Conjugation | Unconjugated |
| Tested Applications | IF, IHC |
| Immunogen | Recombinant fusion protein of human OTX2 (NP_068374.1). |
| Preservatives | Buffer: PBS with 0.02% sodium azide, 50% glycerol, pH7.3. |
| Storage | Store at -20°C. Avoid freeze / thaw cycles. |
| Note | For research use only |
| Isotype | IgG |
| Clonality | Polyclonal |
| Purity | Affinity purification |
| Uniprot ID | P32243 |
| Entrez | 5015 |
| Dilution Range | WB: 1:500-1:2000, IHC-P: 1:50-1:200 |
| Expiration Date | 12 months from date of receipt. |



Immunofluorescence analysis of mouse bra...



Immunohistochemical staining of mouse br...



Immunohistochemical staining of rat brai...