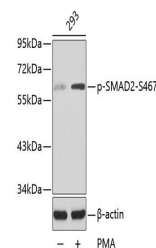


Product Datasheet

SMAD2 (Phospho-S467) antibody (orb536882)

Description	Rabbit polyclonal antibody to SMAD2 (Phospho-S467)
Reactivity	Human
Conjugation	Unconjugated
Tested Applications	WB
Immunogen	A synthetic phosphorylated peptide around S467 of human Smad2(NP_001003652.1).
Preservatives	PBS with 0.01% thiomersal,50% glycerol,pH7.3.
Storage	Maintain refrigerated at 2-8°C for up to 2 weeks. For long term storage store at -20°C in small aliquots to prevent freeze-thaw cycles.
Note	For research use only
Isotype	IgG
Clonality	Polyclonal
MW	60KDa
Uniprot ID	Q15796
Dilution Range	WB: 1:500-1:1000
Expiration Date	12 months from date of receipt.



Western blot analysis of extracts of 293...