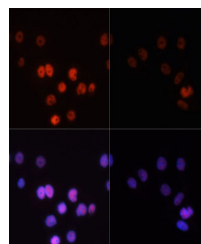


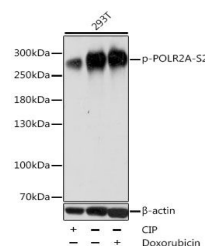
Product Datasheet

POLR2A (Phospho-S2) antibody (orb536881)

Description	Rabbit polyclonal antibody to POLR2A (Phospho-S2)
Reactivity	Human
Conjugation	Unconjugated
Tested Applications	IP, WB
Immunogen	A phospho specific peptide corresponding to residues surrounding S2 of human POLR2A CTD repeatYSPTSPS.
Preservatives	PBS with 0.01% thiomersal,50% glycerol,pH7.3.
Storage	Maintain refrigerated at 2-8°C for up to 2 weeks. For long term storage store at -20°C in small aliquots to prevent freeze-thaw cycles.
Note	For research use only
Isotype	IgG
Clonality	Polyclonal
MW	260kDa
Uniprot ID	P24928
Dilution Range	WB: 1:1000-1:2000, IF: 1:50-1:100, IP: 1:50-1:100
Expiration Date	12 months from date of receipt.



Immunofluorescence analysis of HeLa cell...



Western blot analysis of extracts of 293...