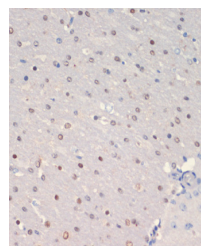


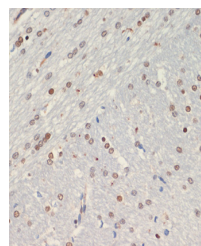
Product Datasheet

OLIG2 antibody (orb536865)

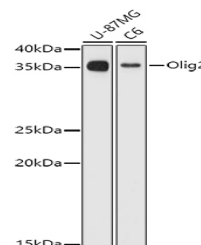
Description	Rabbit polyclonal antibody to OLIG2
Species/Host	Rabbit
Reactivity	Human, Mouse, Rat
Conjugation	Unconjugated
Tested Applications	ELISA, IHC-P, WB
Immunogen	A synthetic peptide corresponding to a sequence within amino acids 1-80 of human Olig2 (NP_005797.1).
Preservatives	PBS with 0.01% thimerosal, 50% glycerol, pH 7.3.
Storage	Maintain refrigerated at 2-8°C for up to 2 weeks. For long term storage store at -20°C in small aliquots to prevent freeze-thaw cycles.
Note	For research use only
Isotype	IgG
Clonality	Polyclonal
MW	35kDa
Uniprot ID	Q13516
Dilution Range	WB: 1:500-1:2000, IHC-P: 1:50-1:100
Expiration Date	12 months from date of receipt.



Immunohistochemistry analysis of paraffi...



Immunohistochemistry analysis of paraffi...



Western blot analysis of various lysates...