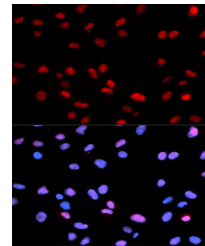


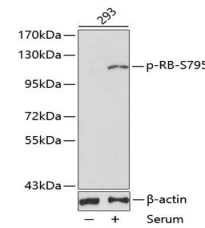
Product Datasheet

RB (Phospho-S795) antibody (orb536805)

Description	Rabbit polyclonal antibody to RB (Phospho-S795)
Reactivity	Human, Mouse, Rat
Conjugation	Unconjugated
Tested Applications	IHC, WB
Immunogen	A synthetic phosphorylated peptide around S795 of human RB(NP_000312.2).
Preservatives	PBS with 0.02% sodium azide, 50% glycerol, pH 7.3.
Storage	Maintain refrigerated at 2-8°C for up to 2 weeks. For long term storage store at -20°C in small aliquots to prevent freeze-thaw cycles.
Note	For research use only
Isotype	IgG
Clonality	Polyclonal
MW	106kDa
Uniprot ID	P06400
Dilution Range	WB: 1:500-1:1000, IF: 1:50-1:100
Expiration Date	12 months from date of receipt.



Immunofluorescence analysis of U2OS cell...



Western blot analysis of extracts of 293...