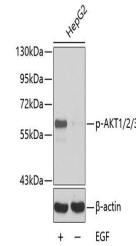


Product Datasheet

AKT1 (Phospho-Y315/AKT2-Y316/AKT3-Y312) antibody (orb536797)

Description	Rabbit polyclonal antibody to AKT1 (Phospho-Y315/AKT2-Y316/AKT3-Y312)
Species/Host	Rabbit
Reactivity	Human, Mouse, Rat
Conjugation	Unconjugated
Tested Applications	IF, IHC, WB
Immunogen	A phospho specific peptide corresponding to residues surrounding Y315 of human AKT1
Preservatives	Buffer: PBS with 0.02% sodium azide,50% glycerol,pH7.3.
Storage	Maintain refrigerated at 2-8°C for up to 2 weeks. For long term storage store at -20°C in small aliquots to prevent freeze-thaw cycles.
Note	For research use only
Isotype	IgG
Clonality	Polyclonal
Purity	Affinity purification
MW	56kDa
Uniprot ID	P31749
Entrez	20720810000
Dilution Range	WB: 1:500-1:1000, IHC-P: 1:50-1:100, IF: 1:100-1:200
Expiration Date	12 months from date of receipt.



Western blot analysis of extracts HepG2 ...