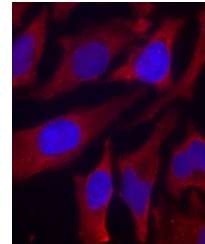


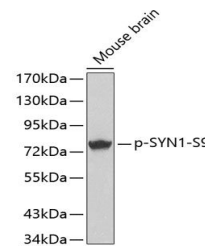
Product Datasheet

SYN1 (Phospho-S9) antibody (orb536788)

Description	Rabbit polyclonal antibody to SYN1 (Phospho-S9)
Species/Host	Rabbit
Reactivity	Human, Mouse, Rat
Conjugation	Unconjugated
Tested Applications	IF, WB
Immunogen	A phospho specific peptide corresponding to residues surrounding S9 of human SYN1
Preservatives	Buffer: PBS with 0.02% sodium azide, 50% glycerol, pH7.3.
Storage	Maintain refrigerated at 2-8°C for up to 2 weeks. For long term storage store at -20°C in small aliquots to prevent freeze-thaw cycles.
Note	For research use only
Isotype	IgG
Clonality	Polyclonal
Purity	Affinity purification
MW	74kDa
Uniprot ID	P17600
Entrez	6853
Dilution Range	WB: 1:500-1:2000, IF: 1:100-1:200
Expiration Date	12 months from date of receipt.



Immunofluorescence analysis of methanol-...



Western blot analysis of extracts from m...