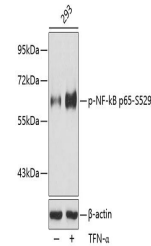


## Product Datasheet

### RELA (Phospho-S529) antibody (orb536773)

<b>Description</b>	Rabbit polyclonal antibody to RELA (Phospho-S529)
<b>Species/Host</b>	Rabbit
<b>Reactivity</b>	Human
<b>Conjugation</b>	Unconjugated
<b>Tested Applications</b>	WB
<b>Immunogen</b>	A phospho specific peptide corresponding to residues surrounding S529 of human RelA
<b>Preservatives</b>	Buffer: PBS with 0.02% sodium azide, 50% glycerol, pH7.3.
<b>Storage</b>	Maintain refrigerated at 2-8°C for up to 2 weeks. For long term storage store at -20°C in small aliquots to prevent freeze-thaw cycles.
<b>Note</b>	For research use only
<b>Isotype</b>	IgG
<b>Clonality</b>	Polyclonal
<b>Purity</b>	Affinity purification
<b>MW</b>	60kDa
<b>Uniprot ID</b>	<a href="#">Q04206</a>
<b>Entrez</b>	<a href="#">5970</a>
<b>Dilution Range</b>	WB: 1:500-1:2000
<b>Expiration Date</b>	12 months from date of receipt.



Western blot analysis of extracts from 2...