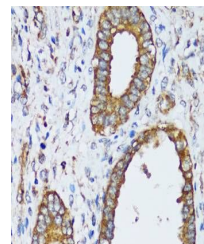


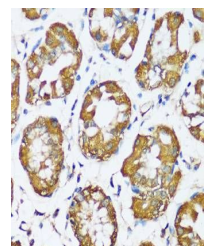
Product Datasheet

MAPK1/MAPK3 antibody (orb536758)

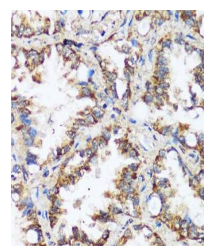
Description	Rabbit polyclonal antibody to MAPK1/MAPK3
Reactivity	Human, Mouse, Rat
Conjugation	Unconjugated
Tested Applications	IHC, WB
Immunogen	A synthetic peptide of human MAPK1/MAPK3ERK1/2(P27361/P28482).
Preservatives	PBS with 0.01% thiomersal,50% glycerol,pH7.3.
Storage	Maintain refrigerated at 2-8°C for up to 2 weeks. For long term storage store at -20°C in small aliquots to prevent freeze-thaw cycles.
Note	For research use only
Isotype	IgG
Clonality	Polyclonal
MW	44kDa
Uniprot ID	P27361, P28482
Dilution Range	WB: 1:500-1:2000, IHC-P: 1:50-1:200
Expiration Date	12 months from date of receipt.



Immunohistochemical staining of human ut...



Immunohistochemical staining of human st...



Immunohistochemical staining of human lu...