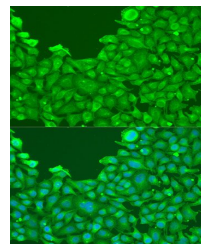


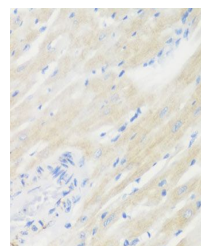
Product Datasheet

BMP2 antibody (orb536742)

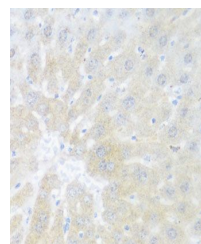
Description	Rabbit polyclonal antibody to BMP2
Reactivity	Human, Mouse, Rat
Conjugation	Unconjugated
Tested Applications	WB
Immunogen	Recombinant fusion protein of human BMP2(NP_001191.1).
Preservatives	PBS with 0.02% sodium azide,50% glycerol,pH7.3.
Storage	Maintain refrigerated at 2-8°C for up to 2 weeks. For long term storage store at -20°C in small aliquots to prevent freeze-thaw cycles.
Note	For research use only
Isotype	IgG
Clonality	Polyclonal
MW	44kDa
Uniprot ID	P12643
Dilution Range	WB: 1:500-1:2000, IHC-P: 1:50-1:200
Expiration Date	12 months from date of receipt.



Immunofluorescence analysis of U2OS cell...



Immunohistochemical staining of mouse he...



Immunohistochemical staining of mouse li...