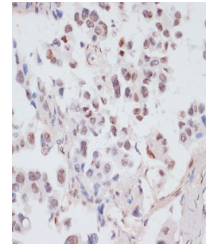


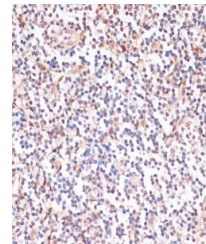
Product Datasheet

PEA15 (Phospho-S104) antibody (orb536735)

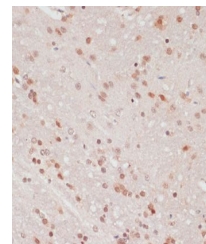
Description	Rabbit polyclonal antibody to PEA15 (Phospho-S104)
Reactivity	Human, Mouse, Rat
Conjugation	Unconjugated
Tested Applications	IHC, WB
Immunogen	A synthetic phosphorylated peptide around S104 of human PEA15(NP_003759.1).
Preservatives	PBS with 0.01% thiomersal,50% glycerol,pH7.3.
Storage	Maintain refrigerated at 2-8°C for up to 2 weeks. For long term storage store at -20°C in small aliquots to prevent freeze-thaw cycles.
Note	For research use only
Isotype	IgG
Clonality	Polyclonal
MW	15kDa
Uniprot ID	Q15121
Dilution Range	WB: 1:500-1:2000, IHC-P: 1:50-1:100
Expiration Date	12 months from date of receipt.



Immunohistochemical staining of human lu...



Immunohistochemical staining of human to...



Immunohistochemical staining of rat brai...