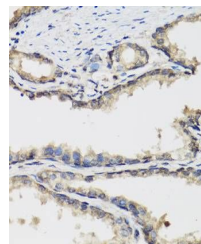


Product Datasheet

PLA2G7 antibody (orb536623)

Description	Rabbit polyclonal antibody to PLA2G7
Reactivity	Human, Mouse, Rat
Conjugation	Unconjugated
Tested Applications	WB
Immunogen	Recombinant fusion protein of human PLA2G7(NP_005075.3).
Preservatives	PBS with 0.02% sodium azide,50% glycerol,pH7.3.
Storage	Maintain refrigerated at 2-8°C for up to 2 weeks. For long term storage store at -20°C in small aliquots to prevent freeze-thaw cycles.
Note	For research use only
Isotype	IgG
Clonality	Polyclonal
MW	60kDa
Uniprot ID	Q13093
Dilution Range	WB: 1:500-1:1000, IHC-P: 1:50-1:100
Expiration Date	12 months from date of receipt.



Immunohistochemical staining of human pr...