

Product Datasheet

MLKL antibody (orb536567)

Description Rabbit polyclonal antibody to MLKL

Reactivity Human, Mouse, Rat

Conjugation Unconjugated

Tested Applications ICC, IF, IHC, WB

Immunogen Recombinant fusion protein of human MLKL(NP_689862.1).

Preservatives PBS with 0.01% thiomersal,50% glycerol,pH7.3.

Storage Maintain refrigerated at 2-8°C for up to 2 weeks. For long term storage store at -20°C in small aliquots to prevent freeze-thaw cycles.

Note For research use only

Isotype IgG

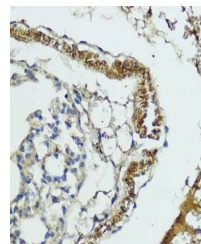
Clonality Polyclonal

MW 54KDa

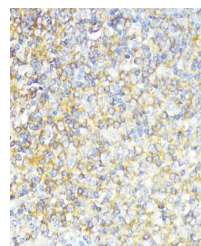
Uniprot ID [Q8NB16](#)

Dilution Range WB: 1:500-1:2000, IHC-P: 1:50-1:200

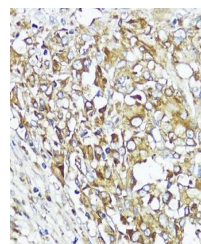
Expiration Date 12 months from date of receipt.



Immunohistochemical staining of mouse lung tissue.



Immunohistochemical staining of human tissue.



Immunohistochemical staining of human tissue.