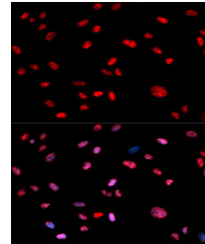


Product Datasheet

Jun (Phospho-T239) antibody (orb536509)

Description	Rabbit polyclonal antibody to Jun (Phospho-T239)
Species/Host	Rabbit
Reactivity	Human
Conjugation	Unconjugated
Tested Applications	WB
Immunogen	A synthetic phosphorylated peptide around T239 of human Jun (NP_002219.1).
Preservatives	Buffer: PBS with 0.02% sodium azide, 50% glycerol, pH7.3.
Storage	Maintain refrigerated at 2-8°C for up to 2 weeks. For long term storage store at -20°C in small aliquots to prevent freeze-thaw cycles.
Note	For research use only
Isotype	IgG
Clonality	Polyclonal
Purity	Affinity purification
Uniprot ID	P05412
Entrez	3725
Dilution Range	WB: 1:500-1:2000, IF: 1:50-1:100
Expiration Date	12 months from date of receipt.



Immunofluorescence analysis of U2OS cell...