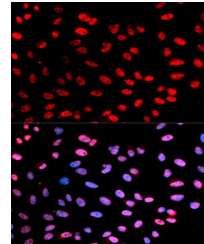


## Product Datasheet

### ESPL1 (Phospho-S1126) antibody (orb536507)

<b>Description</b>	Rabbit polyclonal antibody to ESPL1 (Phospho-S1126)
<b>Species/Host</b>	Rabbit
<b>Reactivity</b>	Human
<b>Conjugation</b>	Unconjugated
<b>Tested Applications</b>	WB
<b>Immunogen</b>	A synthetic phosphorylated peptide around S1126 of human ESPL1 (NP_036423.4).
<b>Preservatives</b>	Buffer: PBS with 0.02% sodium azide,50% glycerol,pH7.3.
<b>Storage</b>	Maintain refrigerated at 2-8°C for up to 2 weeks. For long term storage store at -20°C in small aliquots to prevent freeze-thaw cycles.
<b>Note</b>	For research use only
<b>Isotype</b>	IgG
<b>Clonality</b>	Polyclonal
<b>Purity</b>	Affinity purification
<b>Uniprot ID</b>	<a href="#">Q14674</a>
<b>Entrez</b>	<a href="#">9700</a>
<b>Dilution Range</b>	WB: 1:500-1:2000, IF: 1:20-1:100
<b>Expiration Date</b>	12 months from date of receipt.



Immunofluorescence analysis of U2OS cell...