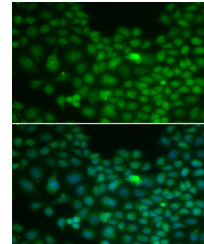


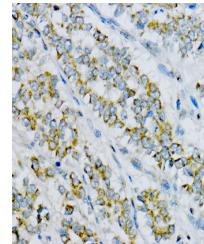
## Product Datasheet

### CLU antibody (orb536452)

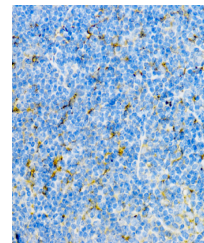
<b>Description</b>	Rabbit polyclonal antibody to CLU
<b>Species/Host</b>	Rabbit
<b>Reactivity</b>	Human, Mouse, Rat
<b>Conjugation</b>	Unconjugated
<b>Tested Applications</b>	ELISA, IF, IHC-P, WB
<b>Immunogen</b>	Recombinant fusion protein containing a sequence corresponding to amino acids 220-449 of human Clusterin alpha chain (NP_976084.1).
<b>Preservatives</b>	PBS with 0.02% sodium azide, 50% glycerol, pH 7.3.
<b>Storage</b>	Maintain refrigerated at 2-8°C for up to 2 weeks. For long term storage store at -20°C in small aliquots to prevent freeze-thaw cycles.
<b>Note</b>	For research use only
<b>Isotype</b>	IgG
<b>Clonality</b>	Polyclonal
<b>MW</b>	38kDa/57kDa
<b>Uniprot ID</b>	<b>P10909</b>
<b>Dilution Range</b>	IF: 1:50-1:200
<b>Expiration Date</b>	12 months from date of receipt.



Immunofluorescence analysis of U2OS cell...



Immunohistochemistry analysis of paraffi...



Immunohistochemistry analysis of paraffi...