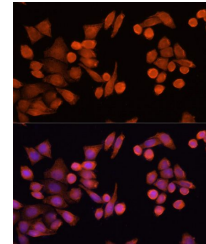


## Product Datasheet

### PLA2G4D antibody (orb536380)

|                            |                                                                                                                                         |
|----------------------------|-----------------------------------------------------------------------------------------------------------------------------------------|
| <b>Description</b>         | Rabbit polyclonal antibody to PLA2G4D                                                                                                   |
| <b>Reactivity</b>          | Human                                                                                                                                   |
| <b>Conjugation</b>         | Unconjugated                                                                                                                            |
| <b>Tested Applications</b> | ICC, IF                                                                                                                                 |
| <b>Immunogen</b>           | Recombinant fusion protein of human PLA2G4D(NP_828848.3).                                                                               |
| <b>Preservatives</b>       | PBS with 0.01% thiomersal,50% glycerol,pH7.3.                                                                                           |
| <b>Storage</b>             | Maintain refrigerated at 2-8°C for up to 2 weeks. For long term storage store at -20°C in small aliquots to prevent freeze-thaw cycles. |
| <b>Note</b>                | For research use only                                                                                                                   |
| <b>Isotype</b>             | IgG                                                                                                                                     |
| <b>Clonality</b>           | Polyclonal                                                                                                                              |
| <b>MW</b>                  | 80kDa/91kDa                                                                                                                             |
| <b>Uniprot ID</b>          | <b>Q86XP0</b>                                                                                                                           |
| <b>Dilution Range</b>      | IF: 1:50-1:200                                                                                                                          |
| <b>Expiration Date</b>     | 12 months from date of receipt.                                                                                                         |



Immunofluorescence analysis of HeLa cell...