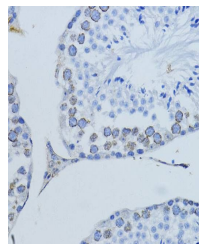


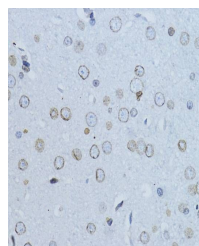
Product Datasheet

LMNB1 antibody (orb536317)

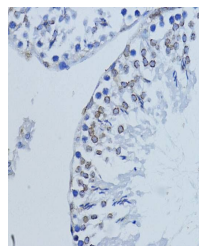
| | |
|----------------------------|--|
| Description | Rabbit polyclonal antibody to LMNB1 |
| Reactivity | Human, Mouse, Rat |
| Conjugation | Unconjugated |
| Tested Applications | ICC, IF, IHC, WB |
| Immunogen | Recombinant fusion protein of human Lamin B1(NP_005564.1). |
| Preservatives | PBS with 0.01% thiomersal,50% glycerol,pH7.3. |
| Storage | Store at -20°C. Avoid freeze / thaw cycles. |
| Note | For research use only |
| Isotype | IgG |
| Clonality | Polyclonal |
| MW | 68kDa |
| Uniprot ID | P20700 |
| Dilution Range | WB: 1:500-1:2000, IF: 1:50-1:200 |
| Expiration Date | 12 months from date of receipt. |



Immunohistochemical staining of mouse te...



Immunohistochemical staining of rat brai...



Immunohistochemical staining of rat test...