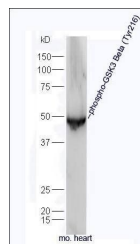


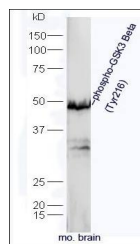
## Product Datasheet

### GSK3 beta (phospho-Tyr216) antibody (orb5359)

|                            |   |
|----------------------------|---|
| <b>Description</b>         | GSK3 beta (phospho-Tyr216) antibody   |
| <b>Species/Host</b>        | Rabbit  |
| <b>Reactivity</b>          | Human, Mouse, Rat   |
| <b>Conjugation</b>         | Unconjugated  |
| <b>Tested Applications</b> | IHC-P, WB   |
| <b>Immunogen</b>           | KLH conjugated Synthesised phosphopeptide derived from human GSK-3 Beta around the phosphorylation site of Tyr216 (VS(p-Y)IC) |
| <b>Target</b>              | phospho-GSK3 Beta (Tyr216)  |
| <b>Preservatives</b>       | 0.01M TBS(pH7.4) with 1% rAlbumin, 0.03% Proclin300 and 50% Glycerol.   |
| <b>Form/Appearance</b>     | Liquid  |
| <b>Concentration</b>       | 1mg/ml  |
| <b>Storage</b>             | Shipped at 4°C. Store at -20 °C for one year. Avoid repeated freeze/thaw cycles.  |
| <b>Note</b>                | For research use only   |
| <b>Isotype</b>             | IgG   |
| <b>Clonality</b>           | Polyclonal  |
| <b>MW</b>                  | 47/51 kDa   |
| <b>Uniprot ID</b>          | <b>P49841</b>   |
| <b>Dilution Range</b>      | WB=1:500-2000, IHC-P=1:100-500  |
| <b>Expiration Date</b>     | 12 months from date of receipt.   |



Western blot analysis of Mouse brain tis...



Western blot analysis of mouse heart Cel...