

---

## Product Datasheet

### GSK-3 Beta (phospho-Ser21/Ser29) antibody (orb5356)

**Description**

GSK-3 Beta (phospho-Ser21/Ser29) antibody

**Species/Host**

Rabbit

**Reactivity**

Human, Mouse, Rat

**Conjugation**

Unconjugated

**Tested Applications**

ICC, IHC-P, WB

**Immunogen**

KLH conjugated Synthesised phosphopeptide derived from human GSK-3 Beta around the phosphorylation site of Ser21+Ser29 (QP(p-S)AFGSMKV(p-S)RD)

**Target**

phospho-GSK-3 Beta (Ser21+Ser29)

**Preservatives**

0.01M TBS(pH7.4) with 1% rAlbumin, 0.03% Proclin300 and 50% Glycerol.

**Form/Appearance**

Liquid

**Concentration**

1mg/ml

**Storage**

Maintain refrigerated at 2-8°C for up to 2 weeks. For long term storage store at -20°C in small aliquots to prevent freeze-thaw cycles.

**Note**

For research use only

**Isotype**

IgG

**Clonality**

Polyclonal

**MW**

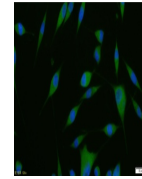
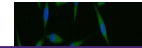
46 kDa

**Uniprot ID**
[P49841](#)
**Dilution Range**

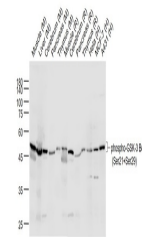
WB=1:500-2000, IHC-P=1:100-500, ICC=1:100, IHC-F=1:100-500, IF=1:100-500, ELISA=1:5000-10000

**Expiration Date**

12 months from date of receipt.



ICC analysis of A431 cell using phospho-...



Western blot analysis using Anti-phospho-...