
Product Datasheet

Rabbit IgG F(ab')₂ antibody (orb535108)

Description

 Rabbit IgG F(ab')₂ antibody

Species/Host

Goat

Reactivity

Rabbit

Conjugation

Unconjugated

Tested Applications

DOT, ELISA, IHC, WB

Immunogen

 Rabbit IgG F(ab')₂ fragment

Preservatives

0.01% (w/v) Sodium Azide

Form/Appearance

Liquid (sterile filtered)

Concentration

10.2mg/mL

Storage

Store vial at 4° C prior to opening. This product is stable for several weeks at 4° C as an undiluted liquid. Dilute only prior to immediate use. For extended storage aliquot contents and freeze at -20° C or below. Avoid cycles of freezing and thawing.

Note

For research use only

Application notes

Anti-Rabbit IgG F(ab')₂ antibody has been tested by ELISA, dot blot, and western blot and is suitable for use in immunohistochemistry. Specific conditions for reactivity should be optimized by the end user.

Isotype

IgG

Clonality

Polyclonal

Purity

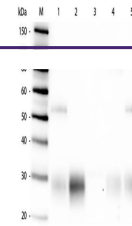
This product was prepared from monospecific antiserum by immunoaffinity chromatography using Rabbit IgG coupled to agarose beads followed by solid phase adsorption(s) to remove any unwanted reactivities. Assay by immunoelectrophoresis resulted in a single precipitin arc against anti-Goat Serum, Rabbit IgG, Rabbit IgG F(ab')₂ and Rabbit Serum. No reaction was observed against Rabbit IgG F(c).

Dilution Range

ELISA: 1:30,000, IHC: 1:1,000 - 1:5,000, WB: 1:5,000

Expiration Date

12 months from date of receipt.


 Western Blot of Anti-Rabbit IgG F(ab')₂ ...